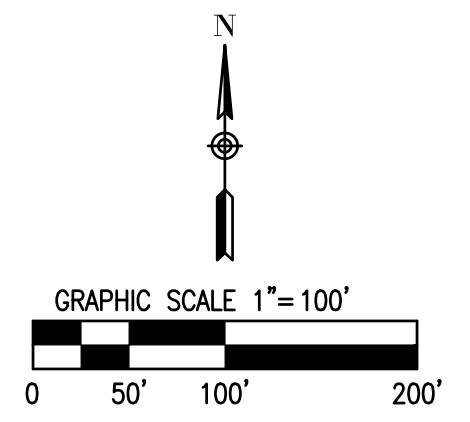


PRELIMINARY/FINAL PLAT OF SUBDIVISION  
**BULLOCK CAMPUS**  
 BEING A SUBDIVISION OF PART OF THE NORTH FRACTIONAL HALF OF SECTION 1,  
 TOWNSHIP 39 NORTH, RANGE 8 EAST OF THE THIRD PRINCIPAL MERIDIAN



AREA TABLE

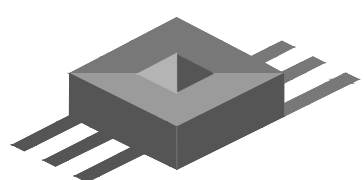
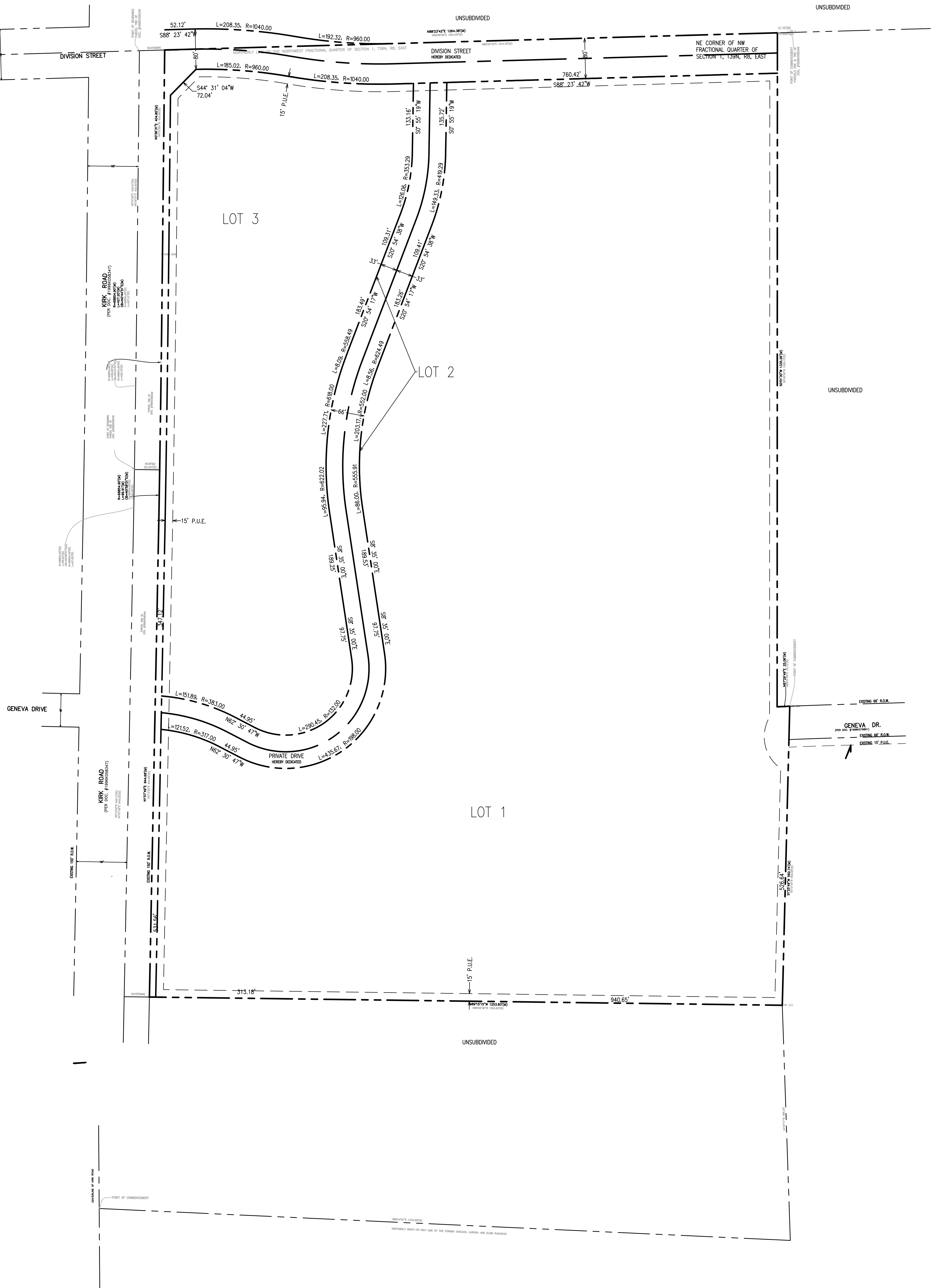
LOT 1:	1,630,146 SQ.FT. 37.42 ACRES ±
LOT 2:	112,955 SQ.FT. 2.59 ACRES ±
LOT 3:	458,525 SQ.FT. 11.22 ACRES ±
DIVISION STREET RIGHT OF WAY DEDICATIONS:	121,663 SQ.FT. 2.79 ACRES ±
TOTAL:	2,353,546.80 SQ.FT. 54.03 ACRES ±

LEGEND

FIP	FOUND IRON PIPE
SIP	SET IRON PIPE
FIR	FOUND IRON ROD
P.U.E.	PUBLIC UTILITY EASEMENT
P.O.B.	POINT OF BEGINNING
P.O.C.	POINT OF COMMENCEMENT
(M)	MEASURED DIMENSION
(R)	RECORD DIMENSION

---	BOUNDARY
---	EXISTING LOTS
---	RIGHT-OF-WAY
---	CENTERLINE
---	EASEMENT



**JACOB & HEFNER ASSOCIATES**

1333 Butterfield Rd, Suite 300, Downers Grove, IL 60515  
 PHONE: (630) 652-4600, FAX: (630) 652-4601  
 www.jacobandhefner.com

PRELIMINARY/FINAL PLAT OF SUBDIVISION

**BULLOCK CAMPUS**

**EP DOYLE**

**GENEVA, IL**

No.	1	ORIGINAL EXHIBIT DATE	05/31/22
		Description	Date